
—

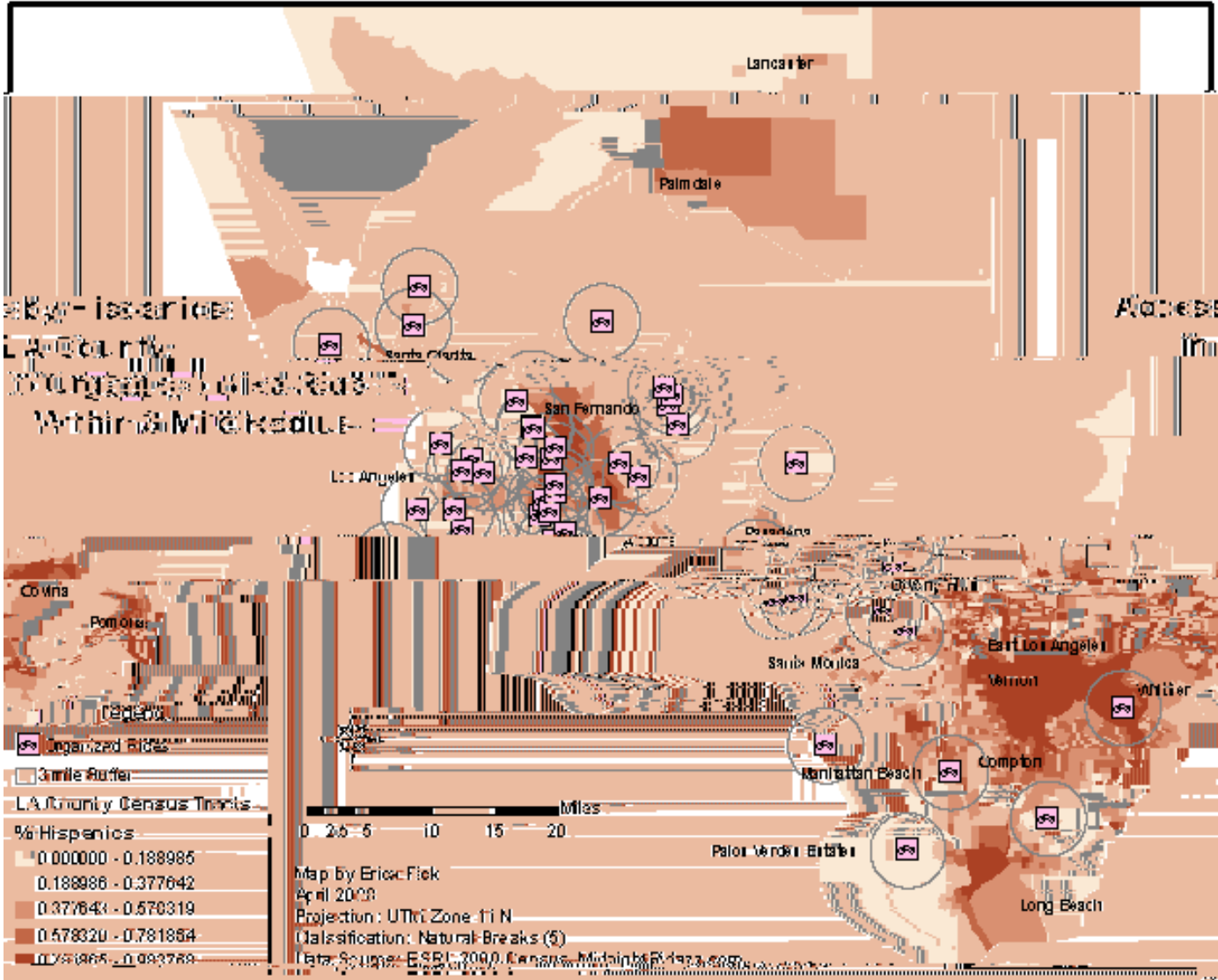
1. Use Phase 3 of the Bicycle Master Plan Public Meetings as an Opportunity to Create a Political Strategy

2. Create a "Task Force" to Hold the City Accountable for the Implementation of the BMP After it's Adopted

3. Refine Political Targets Within City Government to be as Effective as Possible

4. Seek to Create Unity and Alliances Both Within and Outside the Movement

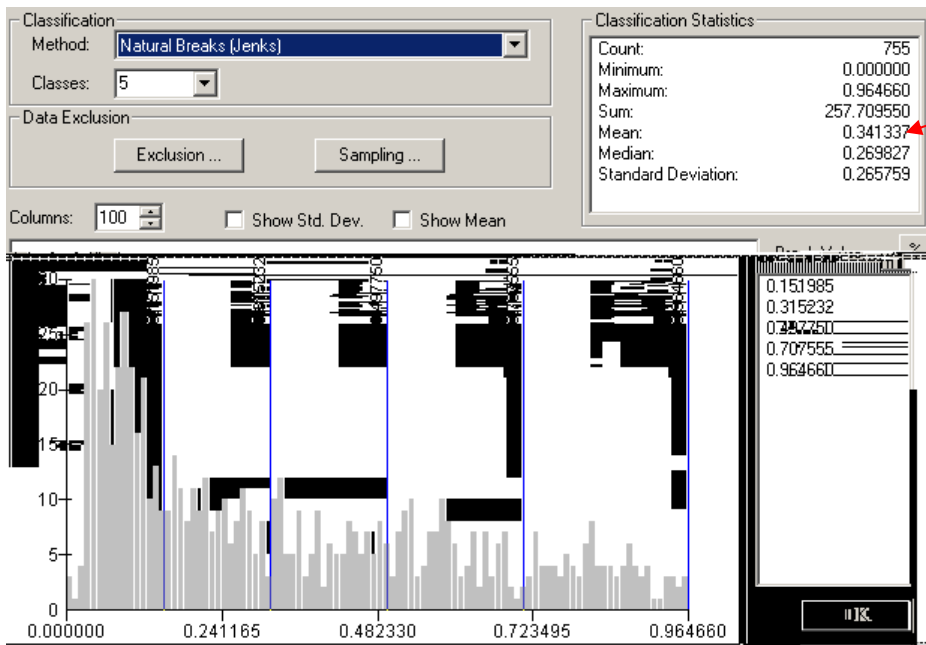
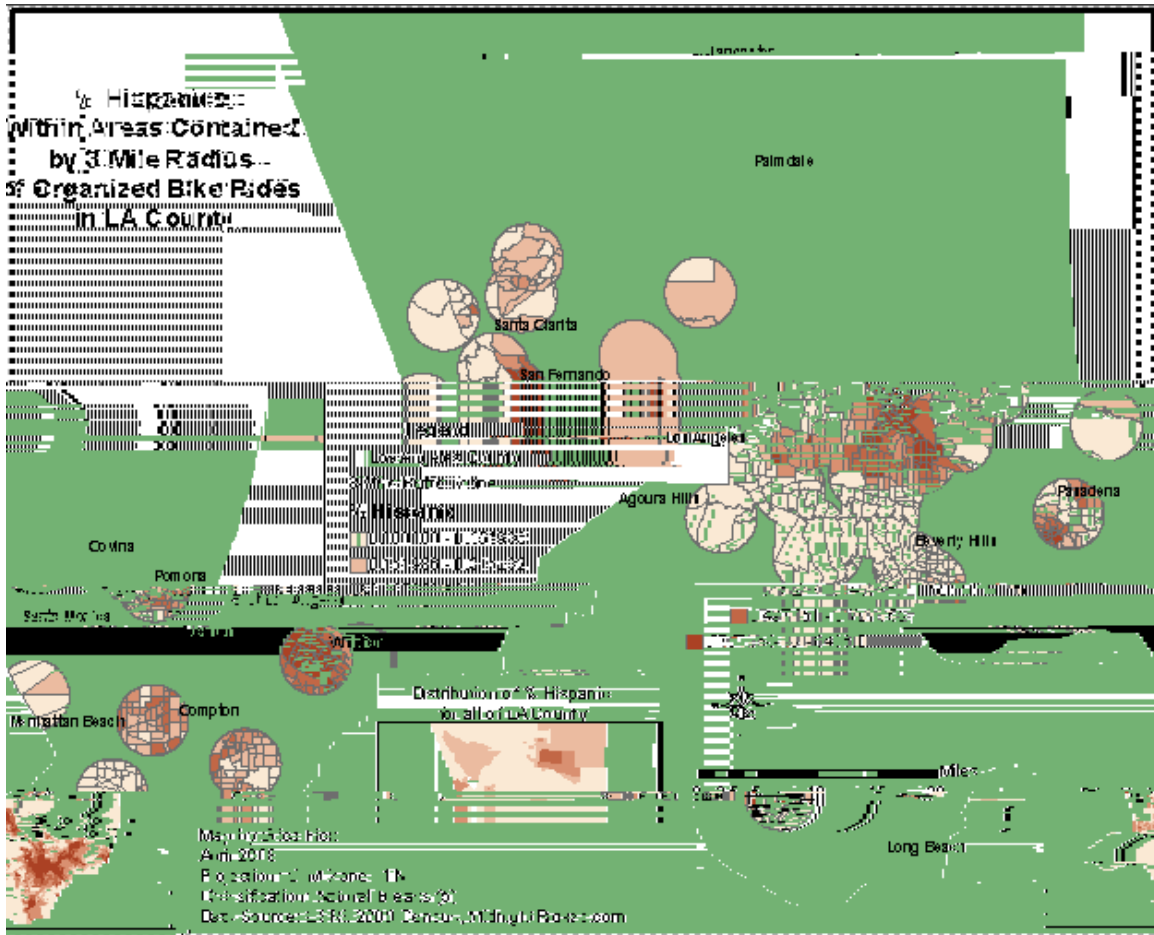
5. Create a Working and Collaborative Relationship with Cyclists, LADOT and LADOP to Help Facilitate a More Inclusive Ideology Toward Bikes in the Transportation Design and Planning

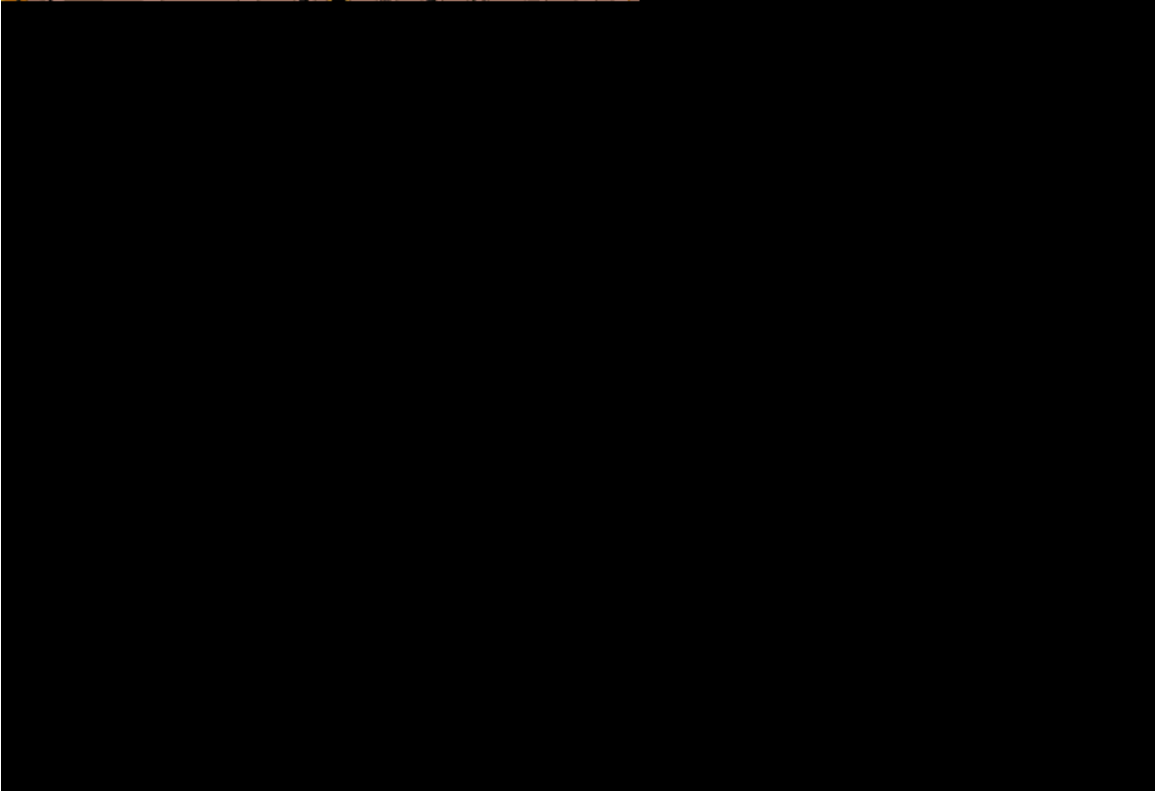


Within 3-mile buffer of census tracts with high Hispanic populations

Map by: Eric Fick
 April 2008

Map by: Eric Fick
 April 2008
 Projection: UTM Zone 11N
 Classification: Natural Breaks (5)
 Data Source: ESRI 2000 Census, Midpoint 1993.com





Interviews: